

Optimization of Wind Energy Converters

Axel Albers

Dipl.-Phys.

Deutsche WindGuard Consulting GmbH

Oldenburger Straße 65, D-26316 Varel

a.albers@windguard.de

Michael Melsheimer

Deutsche WindGuard Dynamics GmbH

Bundesallee 67, D-12161 Berlin

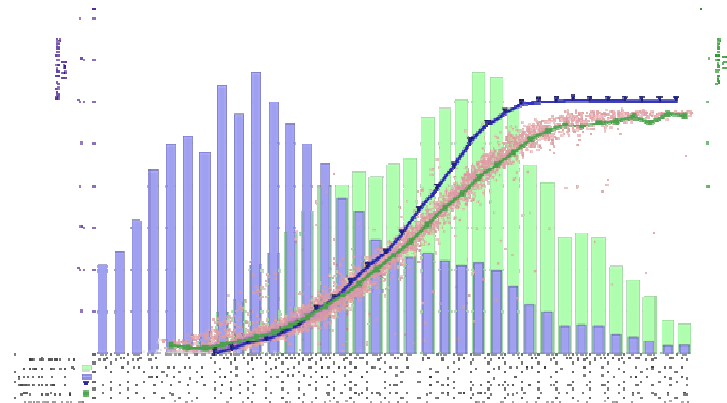
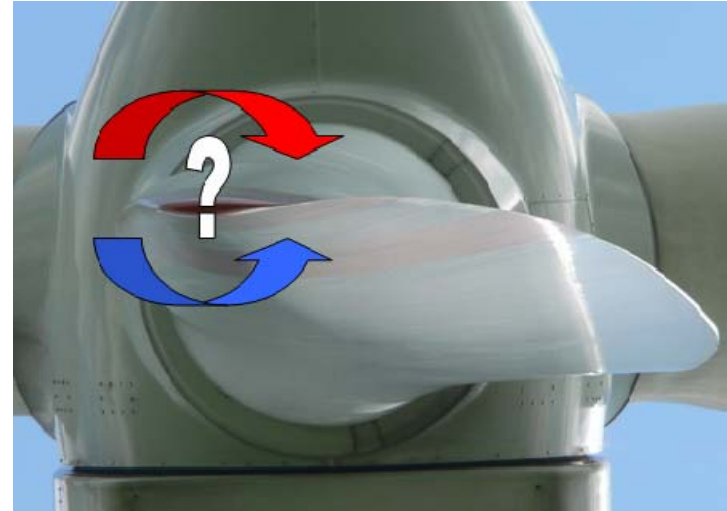
m.melsheimer@windguard.de

Reason for optimization

- ◆ Turbine settings often not set to optimum at individual wind farms: pitch angle, rotor speed (converter settings), pole switching
- ◆ At 10% of analyzed cases blade angles unequal which is a conservative rating
- ◆ Improper aerodynamics devices, like vortex generators, stall strips
- ◆ Turbine availability unnecessary low
- ◆ Reasons in general:
 - ▶ At installation of turbine no opportunity for detailed check of turbine settings
 - ▶ Optimization of turbine never done, because wind turbine is not sold anymore
 - ▶ Technical wind farm manager not skilled enough or too low financial resources for deep analysis

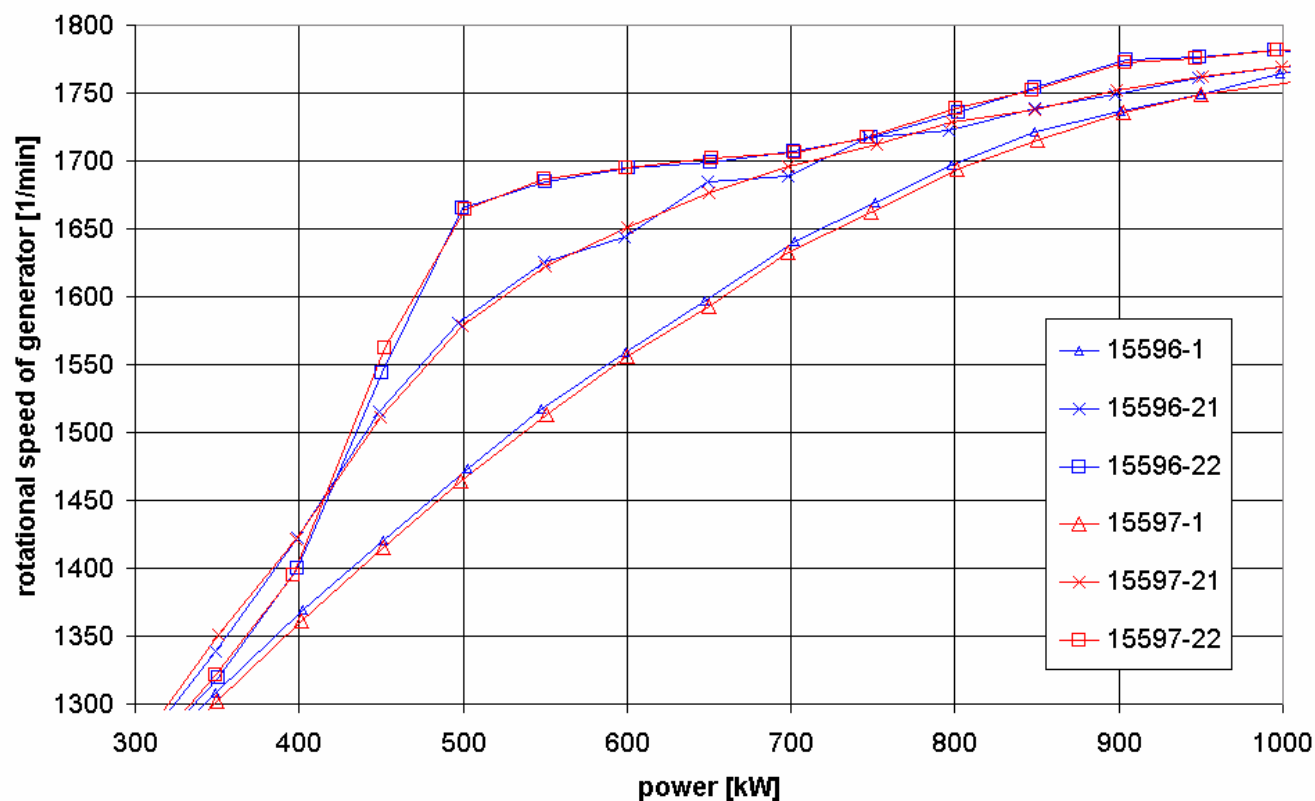
General Procedure

- ◆ Analysis of problem
- ◆ Development of improvements
- ◆ Verification of improvement



Analysis of pitch and rotor speed control

- ◆ Analysis of pitch angle and rotor speed control by SCADA-data



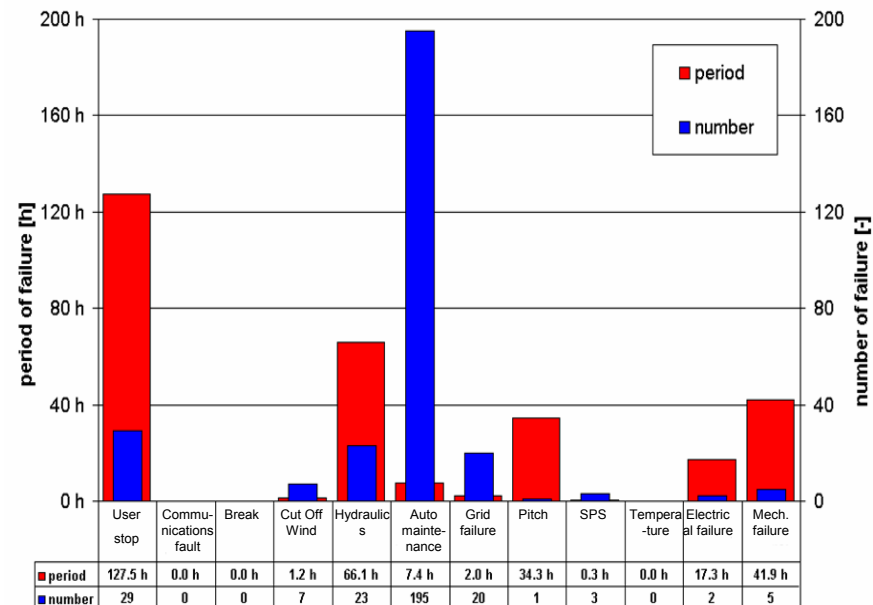
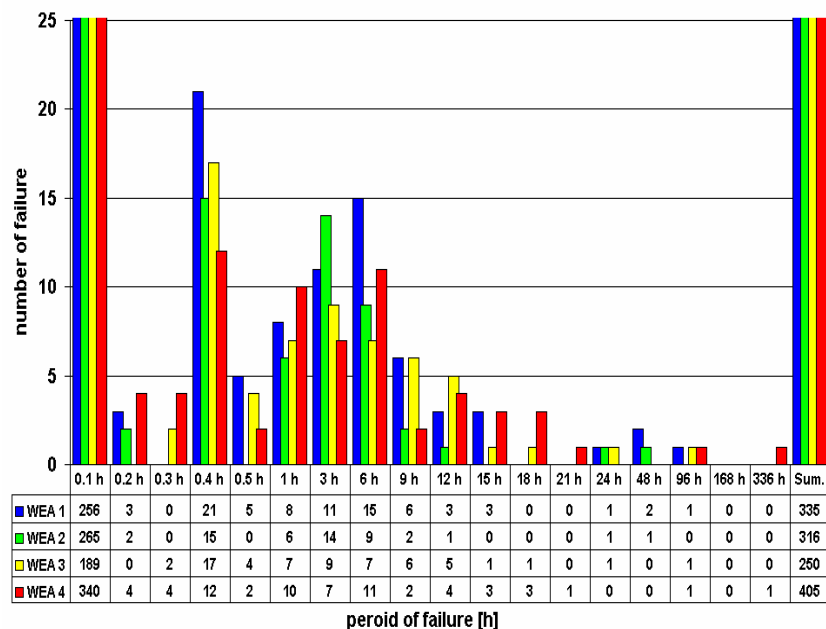
Analysis of rotor imbalance

- ◆ About 20% of WEC show vibrations due to imbalances both aerodynamic (10%) and mass (10%)
- ◆ Turbines showing significant vibrations can be balanced
- ◆ Checking for erosion
- ◆ Measuring blade angles + correction
- ◆ Measure vibration level and calibrate by installing test counterweights
- ◆ Install counterweights calculated
- ◆ Vibration optimized operation



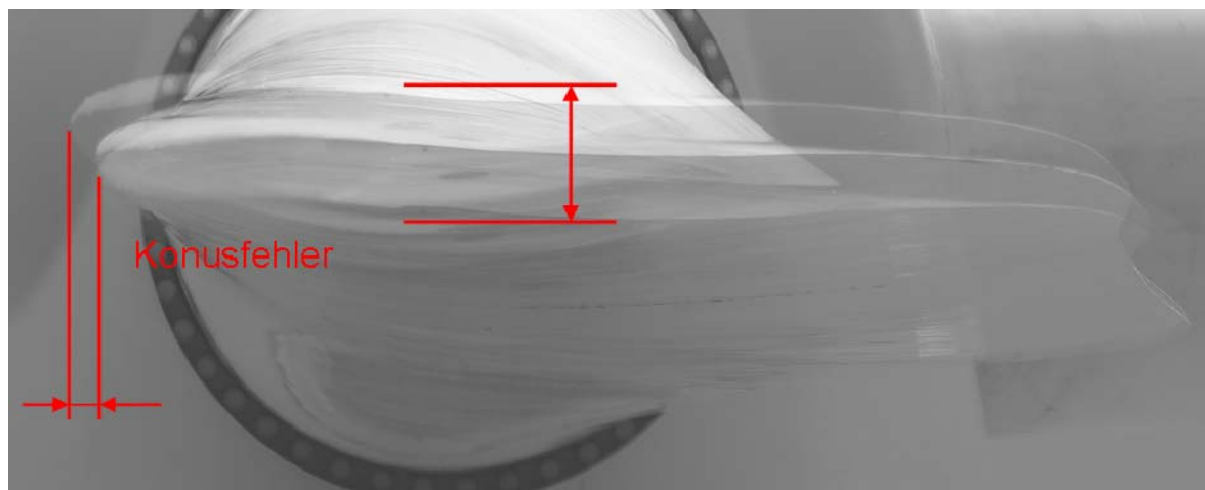
Analysis of SCADA Data

◆ Analysis of error causes and technical losses by SCADA-data



Analysis of blade settings

- ◆ Analysis of blade angles by optical measurements
 - ▶ Optical method to determine all blade faults
 - 1. Individual blade angles
 - 2. Rotor setting
 - 3. Damages at aerodynamic devices
 - 4. Improper angle division and cone angle errors



Improvements

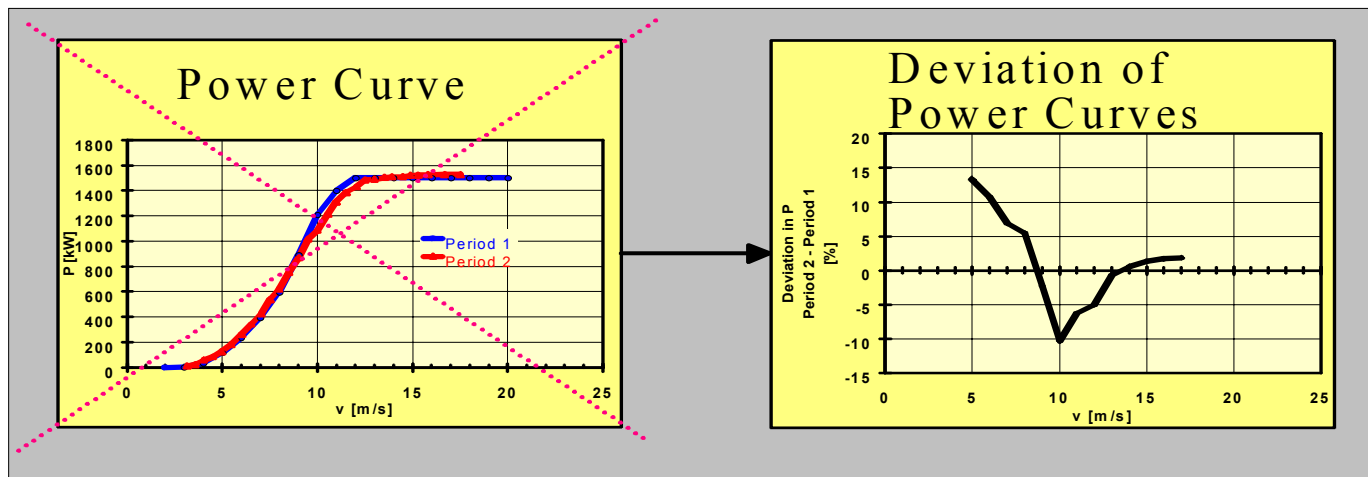
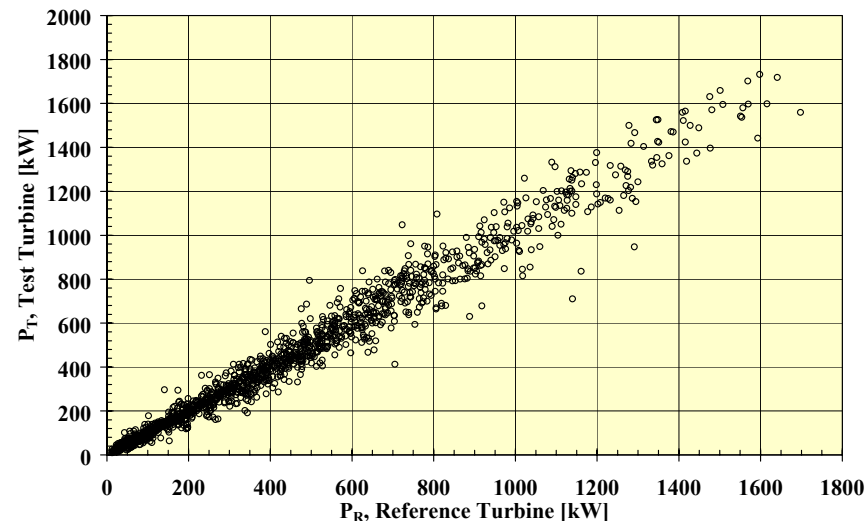
- ◆ Try and error for pitch settings, rotor speed, pole switching
 - ▶ Change only one parameter at once
 - ▶ Leave one turbine 1 unchanged, change one setting at turbine 2 to one direction and at the neighboring turbine 3 to the other direction within limits specified by manufacturer
 - ▶ Observe which direction was the right one, then change turbines 2 and 3 more in the right direction until optimum is exceeded

Improvements

- ◆ Set blade angles to same value
 - ▶ Repair of damages and aerodynamic devices (e.g. Vortex generators, stall strips)
- ◆ Solve origin of low technical availability instead of repairing the same fault time after time
- ◆ Get turbine back to operation after fault as fast as possible

Verification

- ◆ For power curve optimization:
Relative Power Curve Analysis



Relative Power Performance =
deviation of power curve between different periods of time

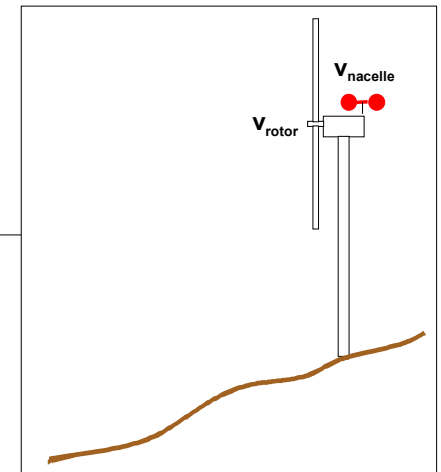
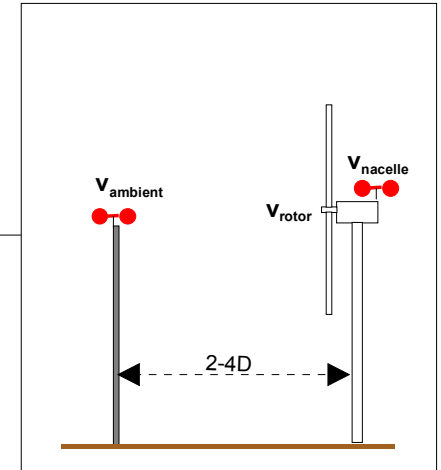
Verification

◆ Alternative: Advanced nacelle anemometry



correction nacelle anemometer

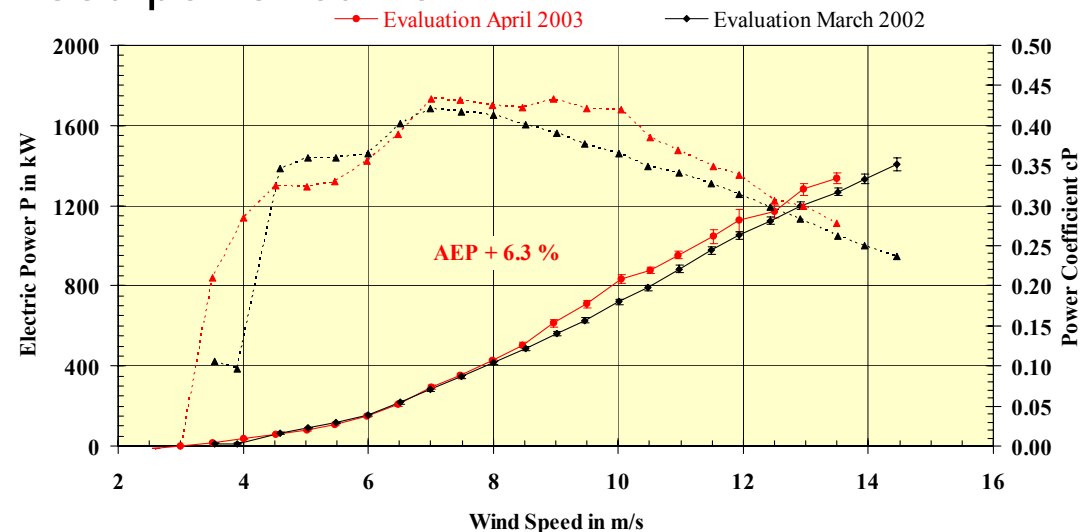
power curve measurement



Examples

◆ Wind Farm A:

- ▶ Analysis of availability problems
- ▶ 5% Increase of availability after improvement
- ▶ Try and error of power curve improvement with 5% improvement by small change of blade angle and dismantling of stall strips
- ▶ Same nacelle anemometer power curve after improvements at all turbines, close to guaranteed power curve



Examples

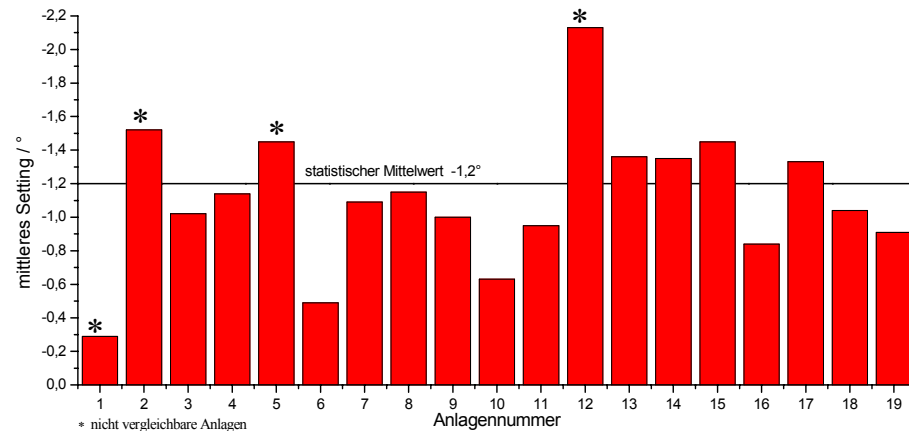
◆ Wind Farm B:

- ▶ Arbitrary rotor speed settings at some turbines

WEC	Blade 1 Tip degree	Blade 2 Tip degree	Blade 3 Tip degree	mean deg	deviation
480	9,38	9,47	9,02	9,29	$\leq 0,1^\circ$
481	9,24	9,58	9,3	9,37	$> 0,1^\circ$
482	8,96	8,71	8,86	8,84	$> 0,3^\circ$
483	8,92	9,85	9,43	9,40	$> 0,5^\circ$

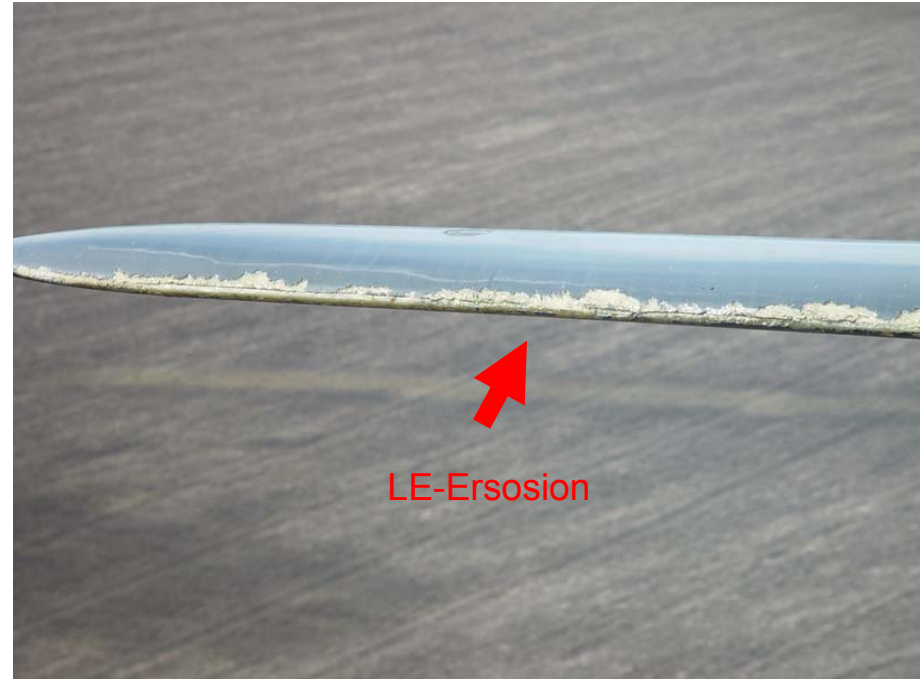
◆ Wind Farm C:

- ▶ Setting deviations, and massive damages at vortex generators, also different blade types



Examples

- ◆ Zond 750 kW:
 - ▶ Individual blade angles fault
 - ▶ setting deviations (some above 1 degree)
 - ▶ massive leading edge erosion (90% of turbines, up to 50% of blade length)
 - ▶ Imbalanced Rotors



Conclusions

- ◆ Analysis SCADA
 - ▶ 1000-2000 Euro per turbine
- ◆ Blade Angle Measurements
 - ▶ 500 Euro per turbine
- ◆ Relative Power Curve analysis
 - ▶ 1000 Euro per Turbine
- ◆ Example
 - ▶ 2MW machine
 - ▶ 2000 full load hours
 - ▶ 4000MWh/a
 - ▶ 0.06€/kWh
 - ▶ 320.000 € turnover/a
 - ▶ 0,9375 cost of analysis in percent of annual turnover
- ◆ Even small improvements pay off after only 1 year